



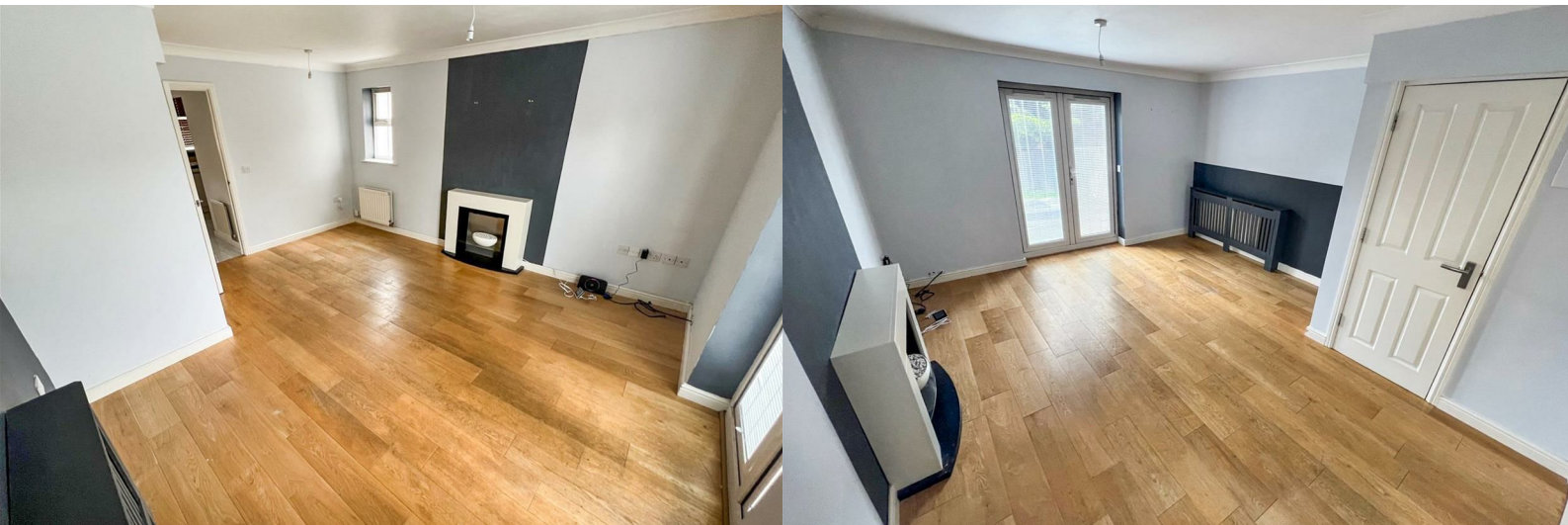
**STUART  
CHARLES**  
ESTATE AGENTS



## Chatsworth Road

, Corby, NN18 8PE

£1,250 Per month



# Chatsworth Road

, Corby, NN18 8PE

£1,250 Per month



## Entrance Hall

Entered via a double glazed door, radiator, stairs rising to first floor landing, doors to:

## Guest W.C

5'0 x 2'3 (1.52m x 0.69m)

Fitted to comprise a two piece suite consisting of a low level pedestal, low level wash hand basin, radiator, double glazed window to front elevation.

## Kitchen

10'9 x 5'10 (3.28m x 1.78m )

Fitted to comprise a range of base and eye level units with a single steel sink and drainer, electric hob with extractor, electric oven, space for free standing fridge/freezer, double glazed window to front elevation.

## Lounge/Diner

15'1 x 13'0 (4.60m x 3.96m)

Double glazed French doors to rear elevation, two radiators, tv point, telephone point, double glazed window to side elevation, under stairs storage.

## First Floor Landing

Stairs rising from ground floor, stairs rising to second floor, doors to:

## Bedroom Two

13'0 x 9'7 (3.96m x 2.92m)

Double glazed window to rear elevation, radiator.

## Family Bathroom

6'6 x 6'3 (1.98m x 1.91m)

Fitted to comprise a three piece suite consisting of a panel bath with mains feed waterfall shower over, low level pedestal, low level wash hand basin, radiator, double glazed window to side elevation.

## Bedroom Three

13'0 x 9'9 (3.96m x 2.97m)

Two double glazed windows to front elevation, radiator.

## Second Floor Landing

Loft access, airing cupboard, doors to:

## Bedroom One

13'0 x 10'1 (3.96m x 3.07m)

Double glazed window to rear elevation, radiator, tv point, door to:

## En-suite

6'8 x 5'10 (2.03m x 1.78m)

Fitted to comprise a a three piece suite consisting of a mains feed shower cubicle, low level pedestal, low level wash hand basin, radiator, double glazed window to side elevation.

## Bedroom Two

13'0 x 9'1 (3.96m x 2.77m)

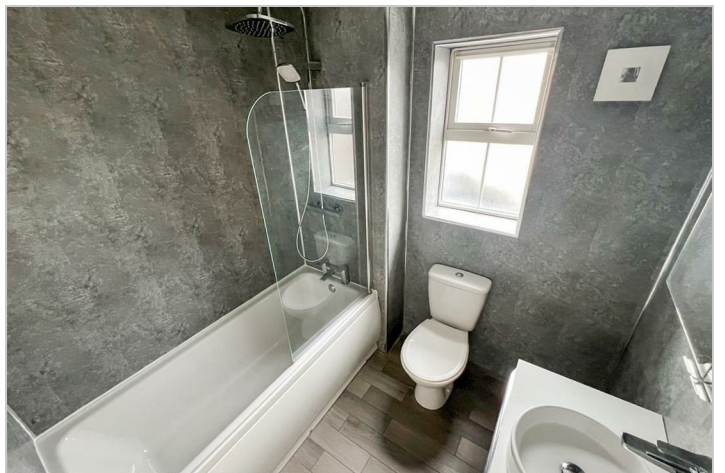
Double glazed window to front elevation, radiator, built in wardrobe.

## Outside

Front: A low maintenance gravel area is enclosed by steel fencing and leads to a driveway that provides off road parking for multiple vehicles and to a garage.

Garage: With up and over door, plumbing for automatic washing machine, space for tumble dryer.

Rear: A large decking area leads onto a laid lawn and is enclosed by timber fencing to all sides.



## Road Map



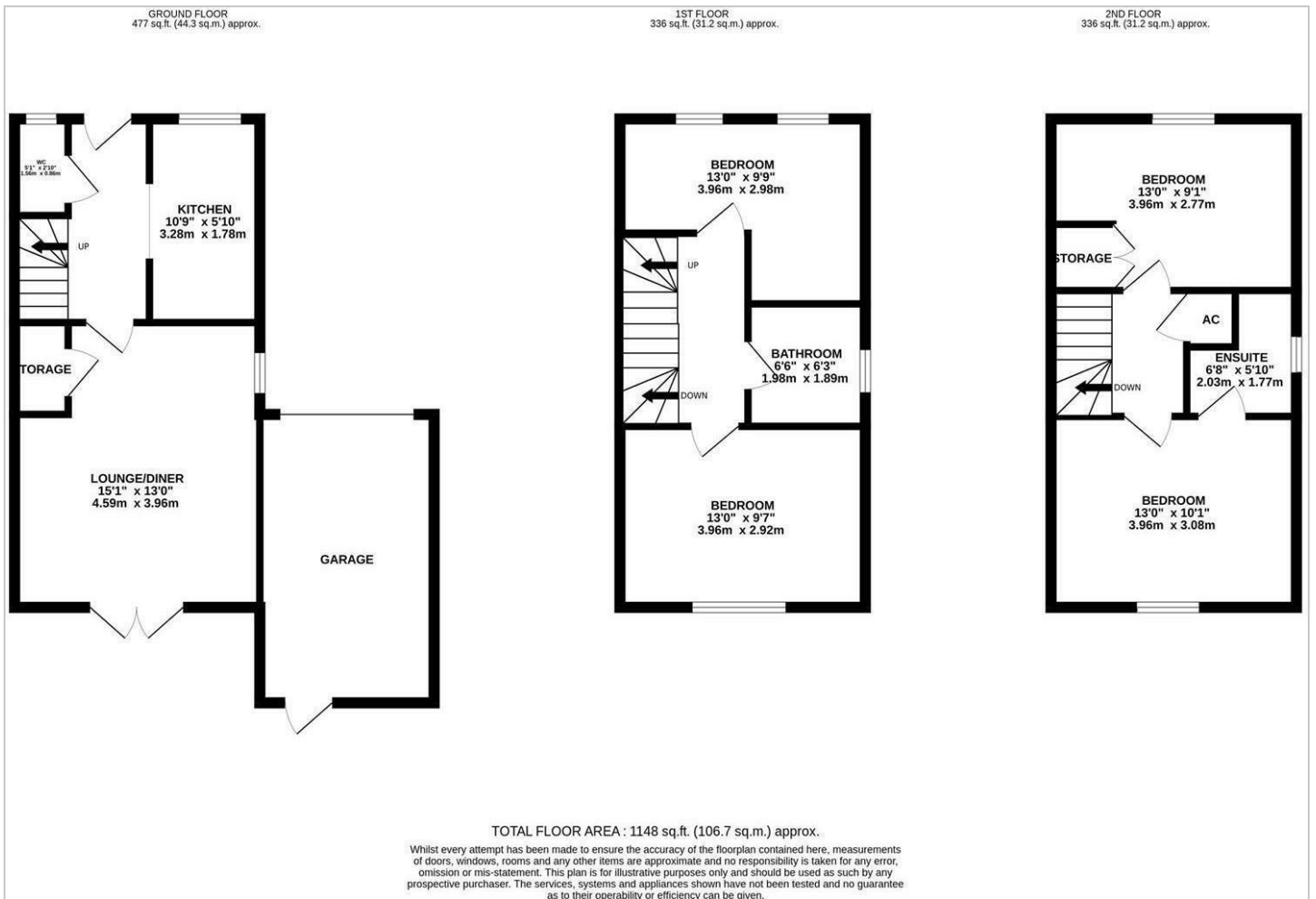
## Hybrid Map



## Terrain Map



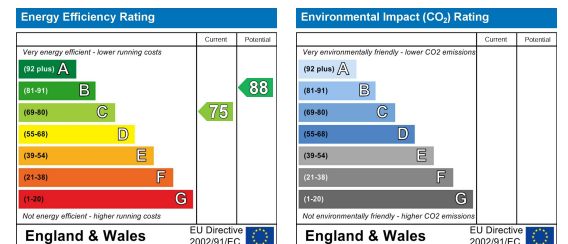
## Floor Plan



## Viewing

Please contact our Stuart Charles Estate Agents Office on 01536 234264 if you wish to arrange a viewing appointment for this property or require further information.

## Energy Efficiency Graph



These particulars, whilst believed to be accurate are set out as a general outline only for guidance and do not constitute any part of an offer or contract. Intending purchasers should not rely on them as statements of representation of fact, but must satisfy themselves by inspection or otherwise as to their accuracy. No person in this firm's employment has the authority to make or give any representation or warranty in respect of the property.